

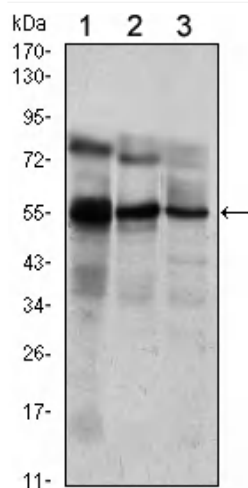


# ERM Monoclonal Antibody

<b>Catalog No</b>	YP-Ab-00971
<b>Isotype</b>	IgG
<b>Reactivity</b>	Human
<b>Applications</b>	WB;ELISA
<b>Gene Name</b>	ETV5
<b>Protein Name</b>	ETS translocation variant 5
<b>Immunogen</b>	Purified recombinant fragment of human ERM expressed in E. Coli.
<b>Specificity</b>	ERM Monoclonal Antibody detects endogenous levels of ERM protein.
<b>Formulation</b>	Ascitic fluid containing 0.03% sodium azide,0.5% BSA, 50%glycerol.
<b>Source</b>	Monoclonal, Mouse
<b>Purification</b>	Affinity purification
<b>Dilution</b>	Western Blot: 1/500 - 1/2000. ELISA: 1/10000. Not yet tested in other applications.
<b>Concentration</b>	1 mg/ml
<b>Purity</b>	≥90%
<b>Storage Stability</b>	-20°C/1 year
<b>Synonyms</b>	ETV5; ERM; ETS translocation variant 5; Ets-related protein ERM
<b>Observed Band</b>	
<b>Cell Pathway</b>	Nucleus.
<b>Tissue Specificity</b>	Ubiquitous.
<b>Function</b>	function:Binds to DNA sequences containing the consensus nucleotide core sequence GGAA.,mass spectrometry: PubMed:11840567,similarity:Belongs to the ETS family.,similarity:Contains 1 ETS DNA-binding domain.,tissue specificity:Ubiquitous.,
<b>Background</b>	function:Binds to DNA sequences containing the consensus nucleotide core sequence GGAA.,mass spectrometry: PubMed:11840567,similarity:Belongs to the ETS family.,similarity:Contains 1 ETS DNA-binding domain.,tissue specificity:Ubiquitous.,
<b>matters needing attention</b>	Avoid repeated freezing and thawing!
<b>Usage suggestions</b>	This product can be used in immunological reaction related experiments. For more information, please consult technical personnel.



## Products Images



Western Blot analysis using ERM Monoclonal Antibody against Jurkat (1), NIH/3T3 (2) and MCF-7 (3) cell lysate.